

Does it end in “ck”, “k”, “c”, or “ke”?

Rules:

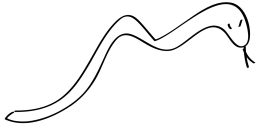
1. Words end in “ck” if there is a short vowel directly before it. (black, duck, lock)
2. Words end in “ke” if there is a long vowel or consonant directly before it. (like, make, rake)
3. Words end in “k” after a consonant or a vowel digraph. (milk, book, week)
4. Words in “c” at the end of a word with 2 or more syllables. (garlic, picnic, Atlantic)

Directions: **Circle the correct spelling** of the word. Then write a sentence using the correct spelling. You **must include one adjective**. Remember, an adjective describes a noun.

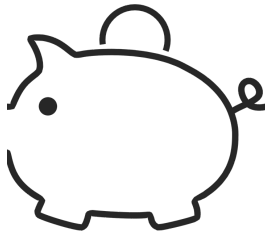


Bike, Bick, Bic, Bik

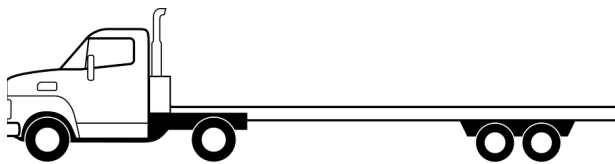
I like my awesome bike.



Snake, Snack, Snak, Snac



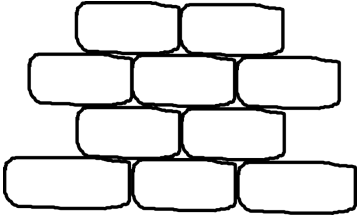
Banke, Banck, Bank, Banc



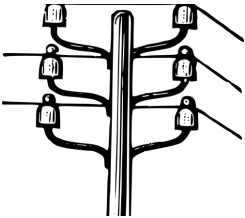
Truke, Truck, Truk, Truc



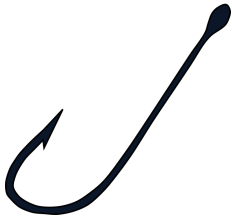
Stinke, Stinck, Stink, Stinc



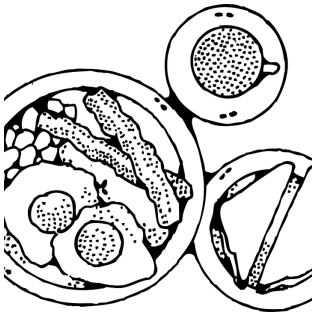
Brike, Brick, Brik, Bric



Electrike, Electrck, Elektrik, Electric



Hooke, Hoock, Hook, Hooc



Yoke, Yock, Yok, Yoc
